



EVOLVICE

_____ Your Trusted Technology Partner

COMPANY PROFILE

WHO WE ARE



Evolvice is a nearshore technology services provider that helps businesses scale, innovate, and enhance efficiency.

Since 2012, we've been developing **software solutions** and building **high-performing remote teams**.

Today, we focus on **integrating AI into business** processes and providing IT and security support to drive digital transformation.



We're proud to work with industry leaders like **Bosch, Douglas, WTS, DHL, Tatweer, and GOSI**, and many others.

Combining German precision with nearshore agility, we provide secure, scalable, and cost-effective IT solutions tailored to your business needs.

FACT & FIGURES

Seniority Levels in Our Team

Senior Level – 70%
Middle Level – 25%
Junior Level – 5%



Project Portfolio

Over 100 projects were completed, showcasing our commitment to delivering quality solutions.

Nearshore Development Centers

Kyiv, Ukraine – 2012
Cairo, Egypt – 2018
Lisbon, Portugal – 2022

We are ensuring a balanced mix of seasoned expertise and fresh perspectives.

Regional Headquarters

Riyadh, Saudi Arabia
Established: 2025

100+

software engineers and consultants



Headquarters

Stuttgart, Germany
Established: 2012

OUR SERVICES



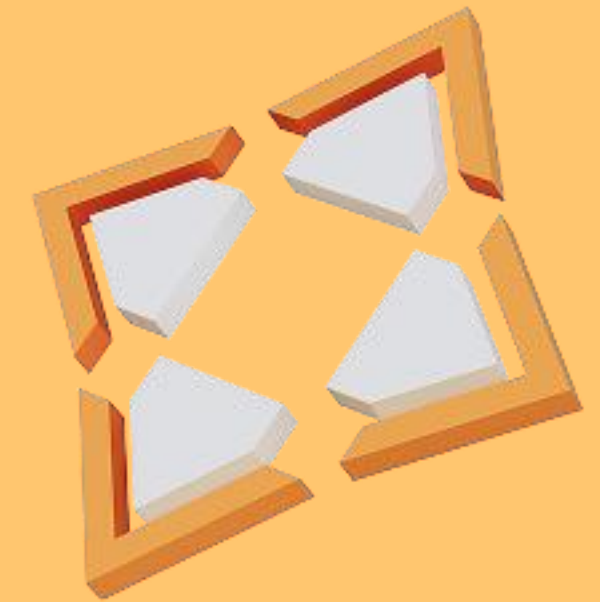
**Dedicated
Nearshore Teams**



**Cybersecurity
Services**



**Cloud and Managed
Services**



**Business
Productivity**

DEDICATED NEARSHORE TEAMS

WHAT WE PROVIDE

Dedicated IT Teams

Skilled engineers based in Egypt, Ukraine and/or Portugal, working exclusively for you.

Team Integration

Teams operate as an extension of your company, using your tools and processes.

Full Service Management

Recruitment, onboarding, HR, payroll, and secure office environment handled by Evolve.

We build and manage dedicated IT teams, providing you with flexible, cost-effective access to top talent and seamless integration with your existing workflows.



KEY ADVANTAGES

Accelerated Talent Acquisition

Quickly access top IT professionals.

Significant Cost Savings

Reduce labor costs compared to local hiring.

Flexible Scalability

Easily adjust team size to meet changing project demands.

Rapid Offshore Development Center (ODC) Setup

Launch your ODC quickly and efficiently.

BUSINESS PRODUCTIVITY

WHAT WE PROVIDE

AI-Powered Insights

Leverage AI technology for advanced data analytics, predictive modeling, and intelligent automation.

Custom Enterprise Software

Develop scalable and secure applications tailored to your specific business needs, addressing gaps in standard software.

RPA & Workflow Optimization

Automate repetitive tasks and streamline processes using tools like Power Automate, freeing up your team for strategic work.

Technology Focus

Microsoft .NET, Microsoft Power Platform, Azure AI, Hybrid Mobile Apps.



KEY ADVANTAGES

Reduce Operational Costs

Achieve up to 80% reduction in manual data entry through RPA implementation.

Accelerate Decision-Making

Gain actionable insights from data with AI-driven analytics, enabling faster, more informed decisions.

Solve Unique Business Challenges

Develop custom software solutions that address specific workflow bottlenecks and enhance productivity.

CYBERSECURITY

Protect your sensitive data and ensure regulatory compliance with our comprehensive cybersecurity services, including penetration testing, vulnerability assessments, and managed security.

WHAT WE PROVIDE

Advanced Penetration Testing & Ethical Hacking

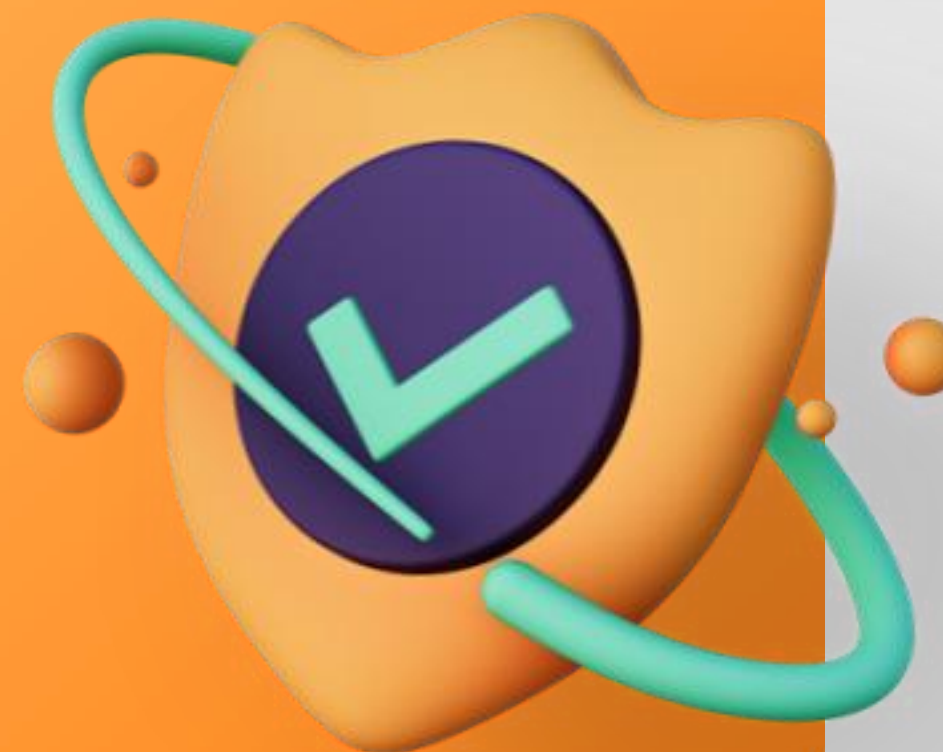
Identifying and exploiting vulnerabilities before malicious actors do.

Tailored Security Awareness Training & Phishing Simulations

Regularly reduce your company's vulnerability with tailored security awareness training and realistic phishing simulations for your employees.

Cloud Security Implementation & Management (Azure, AWS, GCP)

Assessing your security posture and prioritizing remediation efforts.



BENEFITS DELIVERED

Enhanced Data Protection

Safeguard your sensitive data from unauthorized access and cyber threats.

Demonstrated Compliance

Meet industry regulations and customer requirements with our comprehensive security solutions.

Increased Customer Trust

Build trust with your customers by demonstrating a strong commitment to data security.

Reduced Financial & Reputational Risks

Mitigate the impact of cyberattacks and data breaches.

CLOUD & MANAGED SERVICES

OUR CORE SERVICES

24/7 IT Helpdesk & Support

Rapid response to technical issues, minimizing downtime and maximizing productivity.

Network & Server Management

Proactive monitoring and maintenance to ensure optimal performance and security.

Cloud Infrastructure Management

Secure and scalable cloud solutions, including migration, optimization, and monitoring.

Security & Compliance

Comprehensive security assessments, threat detection, and compliance management.



KEY ADVANTAGES

Predictable IT Costs

Reduce unexpected expenses with our fixed-fee managed services.

Expert IT Team

Access certified engineers and cloud specialists.

Seamless Scalability

Easily scale your IT infrastructure to meet evolving business demands.

Enhanced Security Posture

Protect your data and systems with our robust security solutions.

PARTNERS & CERTIFICATIONS



OUR CUSTOMERS

wts

AKKA
PASSION FOR
TECHNOLOGIES


ETECTURE
PART OF SIGMA TECHNOLOGY GROUP

DOUGLAS
GROUP

 TETCO
تطوير لتقنيات التعليم
Tatweer Educational Technologies


knowis



BOSCH

GU
GRETSCH-UNITAS

 FLINT


مصدر
masdr


SIG


HALLESCHE

gosi>


Ritter
SPORT

Deutsche Post DHL

YOUR CONTACT PERSON

MARIIA LITUTA

OPERATIONS AND ACCOUNT MANAGER

✉ mariia.lituta@evolvice.de

☎ +351 931 387 613

📍 Praça Duque de Saldanha 2, PT-1050-094 Lisbon

🌐 [Mariia Lituta](#)

