

Empowering Enterprise Applications with Eclipse GlassFish

Strategic Overview and Customer success stories



Presented By



Executive Summary



Enterprise Java teams face growing pressure to modernize, reduce maintenance, stay compliant, and adopt cloud-native practices.

This presentation highlights how OmniFish supports building scalable, secure Java infrastructure with Eclipse GlassFish and Jakarta EE, without sacrificing standards, security, or performance.

Why Choose GlassFish?



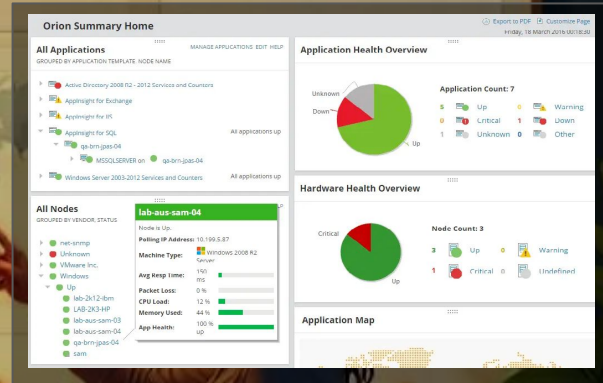
Eclipse GlassFish



GlassFish is a modular, open-source application server for Jakarta EE applications, offering enterprise-grade performance and cloud-ready features. Originally created by Sun Microsystems and later managed by Oracle, and then moved to the open-source Eclipse Foundation.

It is now the official Jakarta EE implementation, the first one to implement new Jakarta EE versions. Backed by an active community and actively led by OmniFish, which also provide enterprise-grade support, GlassFish is a strong alternative to legacy proprietary and under-supported open-source solutions.

Why Enterprises Choose GlassFish



Enterprise IT leaders choose GlassFish for its reliability, flexibility, and cost efficiency.

As a lightweight, open-source, standards-compliant server, it avoids the cost and lock-in of proprietary solutions like WebLogic or WebSphere. Unlike many under-supported open-source tools, GlassFish offers long-term viability with enterprise support from OmniFish.

It integrates smoothly with cloud platforms, CI/CD pipelines, and containers—making it ideal for both modernizing legacy systems and building new applications.



Why Choose OmniFish Support?



OmniFish is more than a support provider—we're your partner in modernizing Java infrastructure. With deep Jakarta EE expertise, we guide everything from architecture to deployment, ensuring smooth, low-risk migrations from legacy platforms, and building efficient solutions based on the best practices.

Our team works hands-on with yours, offering real-world solutions, code-level support, performance tuning, and cloud guidance. We reduce migration friction, speed up adoption, and stay involved beyond go-live—delivering not just support, but real enablement.

OmniFish was founded by three respected experts in the Jakarta EE community:

- Ondro Mihalyi – Java Champion, international conference speaker, Jakarta EE lecturer, and longtime contributor to the platform
- Arjan Tijms – Java Champion, member of multiple Java EE and Jakarta EE specification groups, project lead for Jakarta Faces and several other key specifications
- David Matejček – Project lead of GlassFish and a recognized authority on its internals

With this leadership, OmniFish combines deep technical insight with real-world experience.

Enterprise Support

OmniFish offers comprehensive support services for GlassFish:

Business Package

- 20 hours of free consultancy for development, performance tuning, or migration assistance.
- Raise incidents via email and ticketing system.
- Assistance for GlassFish installations in production, testing, or development environments.
- In-depth troubleshooting, bug fixes, and security patching.

Enterprise Package

- 40 hours of free consultancy with dedicated support engineers.
- 24/7 critical production incident hotline.
- Priority response with SLAs ensuring a 1-hour response time for critical issues.
- Enhanced troubleshooting, performance optimization, and custom feature development.

Expert Maintenance: Long-term updates, security patching, version upgrades, and troubleshooting by Jakarta EE specialists

Responsive Support: Ticketing system with escalation for critical issues

Flexible Engagement: Optional development hours for code-level help and architecture support

Deployment Flexibility: Supports on-premises, cloud, and hybrid environments

Operational Confidence: Eliminates DIY maintenance, enabling faster development without sacrificing stability or compliance



Products We Support

OmniFish offers support for a suite of Java-based servers for diverse needs.

Eclipse GlassFish

Enhance your GlassFish applications with expert insights. From deployment optimization to application migrations, we provide practical solutions to get the most out of your GlassFish installations.

Payara Community

Leverage our deep understanding of Payara Server for performance tuning, clustering, and scalability enhancements. We'll ensure your enterprise applications run securely and efficiently.

Quarkus Framework

Harness the power of Quarkus for cloud-native, high-performance Java applications. Our consultancy helps you adopt Quarkus best practices, troubleshoot issues, and optimize your applications for modern architectures.

Jakarta EE Consultancy

From implementing Jakarta EE standards to modernizing your Java EE applications, we guide you through every step of development and deployment. Our focus on best practices and cutting-edge tools ensures your success in enterprise development.

GlassFish Server is our core Jakarta EE platform, while Embedded GlassFish suits modular and microservice architectures based on runnable JARs.

Piranha Cloud provides a lightweight, cloud-native option, closely related to GlassFish, while Quarkus is suitable for advanced container use cases.

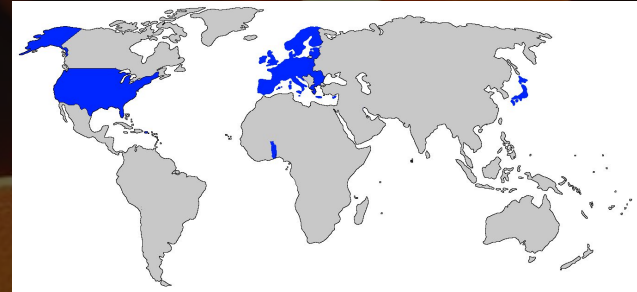
We also provide support for Payara Community users, ensuring smooth operation of existing installations and an easy transition to GlassFish when they are ready.

From monoliths to distributed systems, we ensure end-to-end Java stack reliability.



Case Studies

Based in Europe – operating globally



Lomé Container Terminal (LCT) switched from Payara Enterprise to GlassFish in just three weeks. With OmniFish support, they resolved recurring crashes in a critical customer-facing application.

Ida Infront is migrating over 200 customer installations from WildFly to GlassFish, with OmniFish providing expert consulting, training, and architectural alignment.

Yokogawa seamlessly migrated their SaaS platform from Payara Enterprise to Eclipse GlassFish. Opted for long-term support from OmniFish to get expert support, with significant savings on support costs.

Austrian Lotteries left WebLogic due to high licensing costs and lack of innovation. With OmniFish, they completed a full migration and are now preparing deploying GlassFish to production.

Yet2 upgraded a complex Oracle GlassFish 3 environment to modern GlassFish 7 with OmniFish's help—covering tooling alignment and performance tuning.

Ready to Move Forward?

A Team Of Recognized Jakarta EE Experts

Based In Europe – Operating Globally

We're a team of professionals with many years of experience with GlassFish, Payara, Jakarta EE, Java application development, and Java middleware production support.

We are leading members of the Eclipse GlassFish project and several other projects and specifications, like Eclipse Mojarra, OmniFaces, Jakarta Faces (JSF), or Messaging (JMS). We actively contribute to GlassFish to fix defects, improve performance, add new features, and keep it modern, secure, and reliable.

We are based in Estonia, European Union, our team members are located in several countries in Europe and Americas, and we have customers all over the world, from USA, through Europe, all over to Japan.



OmniFish empowers enterprises to control their Java stack with expert support for the most open, compatible Jakarta EE runtime, GlassFish.

With it, OmniFish delivers stability, performance, and modernization—no lock-in, no compromises. Whether addressing outdated infrastructure, rising licensing costs, or inflexible support agreements, OmniFish is a trusted partner dedicated to delivering effective solutions.

Start the conversation at <https://omnifish.ee> or contact <https://omnifish.ee/contact-us>.